



MAXLIFE
INDUSTRIES
INNOVATING THE
BUILDING ENCLOSURE™

ArmorWallTM PB

STRUCTURAL INSULATED SHEATHING

PRODUCT DESCRIPTION

MaxLife's technology fuses National Gypsum PermaBase® Cement Board to the exterior face of our fused insulation layer further making ArmorWall PB the most unique among that series in that it is also designed to be installed over a traditional weather-resistant barrier and gypsum sheathing wall framing assembly. The insulated cement board, with its integrated drainage plane on the rear, is designed to accept direct adhered masonry, EIFS, and stucco applications all while allowing a continuity between differing exterior finish materials and differing armorwall panels to which they are applied.

PRODUCT ADVANTAGES

Fusion Technology – MaxLife's patented technology fuses component materials rather than laminating which allows for greater strength, no delamination in the field, and a longer lasting product and greater weatherability. Fusion manufacturing of ArmorWall allows multiple finish veneers to be adhered directly to the exterior sheathing board without the use of lath.

NFPA 285 Approved – ArmorWall PB allows the designer to easily incorporate a continuously insulated assembly with an integrated drainage plane for stucco and adhered masonry applications. ArmorWall's tested traits and capabilities allow the designer more flexibility than ever seen before in the industry.

Multi-Component Reduces Labor – ArmorWall PB combines multiple control layers of a wall assembly including thermal, drainage, and adhesion base; into a one-step application which can be installed either vertically or horizontally. This one-step approach allows installation up to 2-3 times faster on the construction site saving time and money.

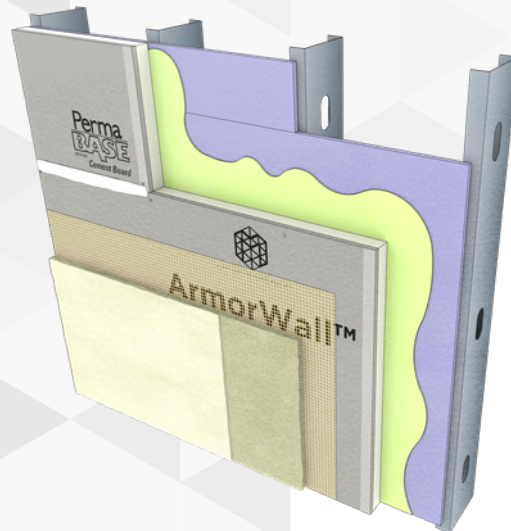
Mold & Mildew Resistant – No components exist within the product to allow any growth of mold or mildew as tested by ASTM C1338.

HANDLING AND USE

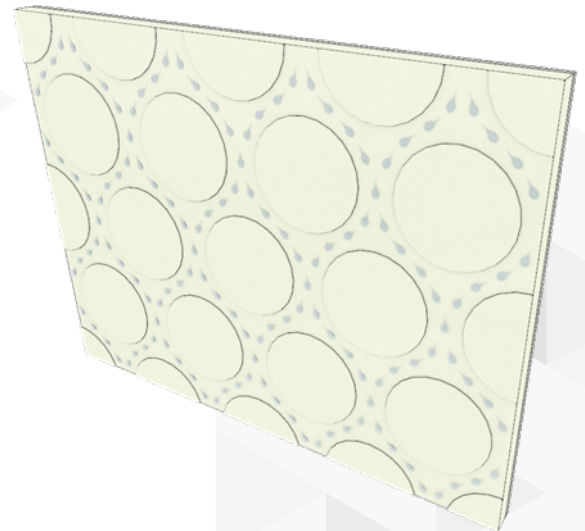
ArmorWall PB can be cut and installed using standard job site hand tools. When being cut to size, avoid breathing dust and minimize contact with eyes. ArmorWall PB should be stored off the ground in original shipment condition until ready for installation. Avoid ground contact or continuous exposure to moisture and direct sunlight. Some skinning and direct coloration of the insulation edges is normal if exposed to UV light prior to installation; however, it does not affect the performance of the panel. Some cupping of the panel is expected during shipment and can be rectified during installation by beginning installation from the center of the panel and working outward per the fastener standard of the designed application.

PRODUCT LIMITATIONS

- Do not install ArmorWall PB below grade. For these applications see ArmorWall BG.
- For required NFPA 285 ratings ArmorWall PB Return must be utilized at rough openings. Contact Technical Services for further details.
- Mechanical attachment of finished veneer is not allowed. Maximum stud spacing is 16" O.C. fasteners shall be placed 8" O.C. in the field. Parallel seams to studs must fall on studs and blocking is not required.



ArmorWall PB



ArmorWall PB Drainage Plane

Explore our other ArmorWall™ Solutions:



BOARD SIZING AND INSULATING FACTORS

Board Coverage	Total Board Thickness	Sheathing Thickness	Insulation Thickness	R-Value	Weight ¹	SKU#
48"x96" (32sqft/sheet)	2"	5/16"	1 11/16"	R11	82 lbs	APB200096
48"x96" (32sqft/sheet)	2 3/4"	5/16"	2 7/16"	R16	86 lbs	APB234096
48"x96" (32sqft/sheet)	3 3/4"	5/16"	3 7/16"	R22.5	93 lbs	APB334096

¹ Average board weight may vary based upon environmental conditions.

FIRE / THERMAL PROPERTIES

Mold and Mildew	No observable growth	ASTM C1338
Fire Resistance	Pass	NFPA 285 ¹
Flame Spread/Smoke Developed Index	0 / 0	ASTM E84
Thermal Resistance	6.5 per inch	ASTM C518

¹ ArmorWall PB passes NFPA 285 attached directly to the stud framing allowing any non-combustible veneer installed to its exterior as inclusive to the NFPA 285 approved assembly.

DEFLECTION PROPERTIES

	Test Method ¹	Stud Thickness	Span	Results
L/240	ASTM E330M-14 (B)	20 ga	114"	-34.85 psf (-1668 Pa)
L/360	ASTM E330M-14 (B)	20 ga	114"	-19.51 psf (-934 Pa)
L/240	ASTM E330M-14 (B)	2x4	114"	-23.41 psf (-1120 Pa)
L/360	ASTM E330M-14 (B)	2x4	114"	-15.5 psf (-742 Pa)

¹ System tested directly to stud with no gypsum backer. Must be calculated above existing gypsum stud wall assembly known deflection properties.



MAXLIFE
INDUSTRIES
INNOVATING THE
BUILDING ENCLOSURE™



For specific inquiries regarding installation of ArmorWall please contact MaxLife Industries Customer Services.

Company Address | 4995 South Main Street, Salisbury, North Carolina 28147
 Website Address | www.maxlifeindustries.com
 Toll Free Number | 1-844-MAX4YOU (1-844-629-4968)
 Customer Service Email | cs@maxlifeindustries.com

